

STATE OF HAWAI'I  
 UNIVERSITY OF HAWAI'I  
 UNIVERSITY OF HAWAI'I AT MĀNOA  
 OFFICE OF THE PROVOST  
 SCHOOL OF OCEAN AND EARTH  
 SCIENCE AND TECHNOLOGY

**HAWAI'I INSTITUTE OF MARINE BIOLOGY**  
 ORGANIZATION CHART  
 CHART V

OFFICE OF THE DIRECTOR HAWAII INSTITUTE OF MARINE BIOLOGY Org Code: MAHIMB	
Director, #89005	1.00
Admin Officer, PBB, #78439	1.00
Admin & Fisc. Supp. Sp., PBA, #78493	1.00
Research Associate, PBB, #78278	1.00

RESEARCH & INSTRUCTION Org Code: MARIMB
Chart V-A

FACILITIES SUPPORT Org Code: MAFSMB	
Aux. & Fac. Svcs Officer, PBB, #81826	1.00
Marine Lab Supervisor, PBB, #80720	1.00

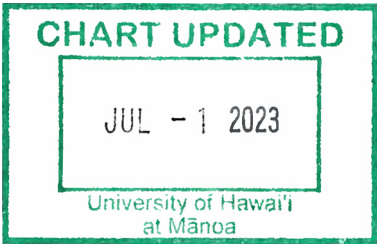
ADMIN SUPP/FISCAL OFFICE Org Code: MAASMB	
Admin Svcs Mgr, PBB, #81865	1.00
HR Specialist, PBA, #77762	1.00
Admin Officer, PBB, #77589, #80401	2.00

ISLAND SECURITY Org Code: MAISMB
Non-Appropriated Funds

LABORATORY SUPPORT Org Code: MALSMB	
Electrician I, BC10, #900498	1.00
Janitor II, BC02: #14341, 901069	2.00
Groundskeeper II, WS02: #111573, 901082	2.00
Building Maintenance Wkr I, BC09, #900813	1.00
Maintenance Mechanic I, BC09, #8039	1.00

VESSEL OPERATIONS Org Code: MAVOMB	
Research Vessel Op., BC09: #15462, #15743	2.00

**CHART TOTAL:**  
 General Funds:      PERM    TEMP  
    19.00    --



STATE OF HAWAI'I  
 UNIVERSITY OF HAWAI'I  
 UNIVERSITY OF HAWAI'I AT MĀNOA  
 OFFICE OF THE PROVOST  
 SCHOOL OF OCEAN AND EARTH  
 SCIENCE AND TECHNOLOGY  
 HAWAI'I INSTITUTE OF MARINE BIOLOGY

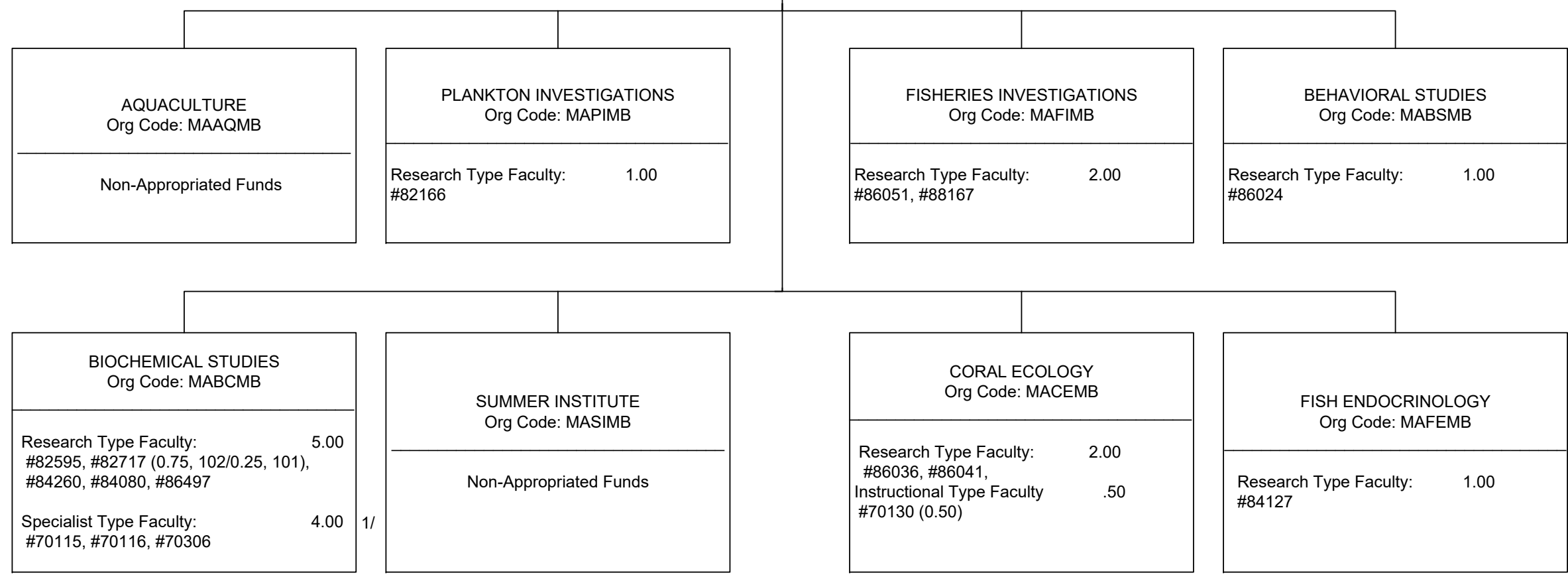
OFFICE OF THE DIRECTOR  
 HAWAII INSTITUTE OF MARINE BIOLOGY

RESEARCH & INSTRUCTION  
 Org Code: MARIMB

---

Specialist Type Faculty: 3.00  
 #86035, #86043, #88730  
 Instr. & Stud Supp. Spec., PBB, #81790 1.00

**RESEARCH & INSTRUCTION**  
 ORGANIZATION CHART  
 CHART V-A



‡1/ Pending establishment of Legislatively Appropriated Cultural Coordinator

CHART TOTAL:	PERM	TEMP
General Funds:	20.50	--

STATE OF HAWAII  
UNIVERSITY OF HAWAII  
UNIVERSITY OF HAWAII AT MANOA  
OFFICE OF THE PROVOST  
SCHOOL OF OCEAN AND EARTH SCIENCE AND TECHNOLOGY  
**HAWAII INSTITUTE OF MARINE BIOLOGY**

FUNCTIONAL STATEMENT

**OFFICE OF THE DIRECTOR OF THE HAWAII INSTITUTE OF MARINE BIOLOGY –  
Org Code: MAHIMB**

The Director administers the research, educational, administrative, and facility support services for the Hawaii Institute of Marine Biology (HIMB). In addition, the director represents HIMB with a multitude of University, State, national and international research programs. The Director provides leadership and maintains an environment supportive of excellence in research. The Director is liaison between HIMB and the offices of the Dean of SOEST and the Office of the Vice-Chancellor for Research of Mānoa. The Director also represents HIMB with local and state community groups and within the national and international research community.

The Director approves personnel appointments, research proposals, faculty tenure and promotion actions, provides policy guidance, and reviews and evaluates HIMB programs. The director also approves, authorizes and monitors HIMB's operational budget and expenditures for each fiscal year.

The Director's office includes an Administrative Officer and an Office Manager who provides support to the faculty, staff and students; and a boating and diving safety officer who is responsible for the safe use of the research boat fleet and diving gear as well as providing UH Diving Office certified training for UH-affiliated researchers and students.

**ADMINISTRATIVE SUPPORT/FISCAL OFFICE – Org Code: MAASMB**

HIMB is a largely independent off-campus facility located on Moku o Lo'e (Coconut Island) in Kāne'ōhe Bay. The Administrative Services Manager serves as chief administrative advisor to the Director. The Administrative Support Office provides administrative support for ongoing scientific activity within HIMB, is responsible for financial planning, management, and control of HIMB funds including state allocations, funds received via contract and grants and other revenue sources; assures the efficient management of research and training contracts and grants and other revenue sources. The Administrative Support/Fiscal office provides personnel services and supervises the maintenance of administrative fiscal and personnel records. The Administrative Services Manager plans and supervises the work of professional and clerical staff; trains staff in policies and procedures and interacts directly with various local, state and federal agencies on contract and grant administration.

**FACILITIES SUPPORT – Org Code: MAFSMB**

The campus of the Institute comprises the 29-acre island, Moku o Loe, and the 64-acre patch reef that surrounds the island. The Auxiliary and Facilities Services Officer directs the maintenance and operation of the physical plant, which includes responsibility for the shop and security staff and the vehicles, research vessel and equipment which are integral to the marine biology laboratory. Administrative responsibility extends to general maintenance of the buildings, and scientific and support equipment. These include laboratories, classrooms, conference rooms, vehicles, and the boat fleet. The Auxiliary and Facility Services Officer handles the day-to-day operation of the maintenance team and nonscientific vessel operation. A Research Support specialist is also on staff to assist researchers with permitting, water quality monitoring, and

coordination of maintenance and repair of shared scientific equipment, as well as collection, storage, and management of Hazardous Materials and Hazardous Waste across HIMB..

Island Security – Org Code: MAISMB

HIMB's security officers are tasked with providing after-hours security for the island and the Lilipuna Road parking lot. They also, to the extent possible, document and report state poaching restrictions in the Hawaii Marine Laboratory Refuge, which is comprised of the 64 acre reef surrounding Coconut Island and 25 feet of ocean beyond the reef edge.

Vessel Operations – Org Code: MAVOMB

HIMB's fleet includes two large personnel/light freight carrier and a number of Boston Whaler-sized vessels designed for research within the Bay. Two certified captains are on staff who can operate the larger vessels, one of which is used to bring classes and other large groups to the island, and the other is used primarily for transport of other large loads to and from the island.

Laboratory Support – Org Code: MALSMB

The Institute currently has positions for two groundskeepers, two janitors, one building maintenance worker, one electrician, and one maintenance mechanic who are responsible for maintaining the Institute's buildings, grounds, vehicles, boats and infrastructure.

## **RESEARCH AND INSTRUCTIONAL ACTIVITIES**

The central focus at HIMB is to support research and educational activities. The Hawai'i Institute of Marine Biology has 19 permanent faculty members. These faculty members serve as advisors for between 100 to 125 graduate students, undergraduate students and post-doctoral scholars whose research activities are focused mainly at Moku o Lo'e, Kāne'ōhe Bay and other coastal waters of the Hawaiian Islands, including the Papahānaumokuākea Marine National Monument. The Hawaii Institute of Marine Biology has an international reputation in the areas of coral reef biology, marine chemistry, the behavior of marine animals, pelagic fisheries, environmental physiology, and endocrinology, the ecology of tropical near-shore ecosystems, and tropical aquaculture place-based and immersive education particularly for kama'aina students, and collaboration with local community organizations on Indigenous marine resource management. Numerous associated faculty from other UH departments and partner institutions participate in the research and instructional activities that occur at HIMB.

## **RESEARCH & INSTRUCTION – Org Code: MARIMB**

The HIMB Education Program's mission is to cultivate the next generation of Hawai'i's ocean scientists, managers and stewards to protect and conserve the marine resources of the Hawaiian Islands. Goals are achieved through a focused set of program objectives in community and school tours, formal curriculum, and training internships.

## **AQUACULTURE – Org Code: MAAQMB**

HIMB provides net-pen, tank space and grant administration for coral restoration and aquaculture researchers from a number of University departments. HIMB's unique setting makes spawning and larval growth studies possible.

## **PLANKTON INVESTIGATIONS – Org Code: MAPIMB**

HIMB scientists study marine bacteria, their effect on their surroundings and where the different groups are found in the water column.

### **FISHERIES INVESTIGATIONS – Org Code: MAFIMB**

The Pelagic Fish and Shark Research group studies the sensory physiology and ecology of top predators such as tunas, billfish, sharks, rays and other top carnivores, and their distribution and movements. Electronic tags and transmitters are used to obtain information about the habitat preferences and behavior of these various species. The Marine Mammal Research Program uses empirical and applied research to support conservation and management of marine megafauna.

### **BEHAVIORAL STUDIES – Org Code: MABSMB**

Researchers at HIMB study the behavior of reef fish, as well as pelagic animals, investigating spatial population dynamics of reef organisms and marine community ecology.

### **BIOCHEMICAL STUDIES – Org Code: MABCMB**

The Marine Evolutionary Genetics research group uses advanced technology to: 1) conserve the genetic diversity of Hawai'i's native fauna, 2) reveal the processes that promote biodiversity in Hawai'i and across the Pacific, and 3) illuminate the natural history and biology of tropical marine animals and ecosystems in the service of conservation.

### **SUMMER INSTITUTE – Org Code: MASIMB**

Each summer the Schmidt Ocean Institute Foundation supports the Schmidt HIMB Summer Program for post baccalaureate students. HIMB faculty design and deliver curriculum that leverage the HIMB's research capacities, facilities, and location of Moku o Lo'e to advance scientific and career goals of participants who otherwise may not have this unique opportunity. The course includes lectures, hands-on field work, a lab component, and data analysis for projects developed during the program.

### **CORAL ECOLOGY – Org Code: MACEMB**

HIMB faculty conduct coral reef research including:

- 1) biochemistry & remote sensing,
- 2) reproduction, development, immune functions & environmental adaptation,
- 3) fish trophic ecology & ecosystem linkages,
- 4) coral reef assessment & monitoring,
- 5) coral symbiosis and response to environmental changes,
- 6) ecology of microorganisms and spread of alien species, and
- 7) coral reef ecology, processes & conservation.

### **FISH ENDOCRINOLOGY – Org Code: MAFEMB**

This lab uses quantitative ecology, biomechanics and informatics to study coral reef fishes, fauna and ecosystems.